

ENHANCE ANY WEDDING OR EVENT SPACE

WITH **SHEER FABRIC**

What is sheer?

Sheer fabric, also known as Voile, is a lightweight, translucent and soft fabric that is commonly sold by the roll. Event decorators use this fabric for ceiling swag, wedding décor and up-lighting. This fabric can also be sewn into drape panels for a uniform look.

| CLOTH | WEIGHT | STANDARD DRAPE WIDTH | FABRIC ROLL WIDTH |
|-----------------------|-----------------|----------------------|-------------------|
| 100% POLYESTER FABRIC | 2.4 OZ/SQ. YARD | 118"W | 118"W |

- Translucent
- Inherently Flame Resistant (I.F.R.)*
- Comes in 118" wide panels
- Used for layering with valences and multi-drape setups
- Popular for Mandaps and Chuppahs

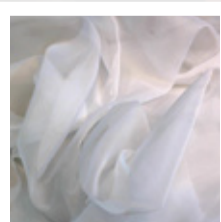
Fabric Care Instructions:

Machine wash in cold water with mild detergent and with like colors. For best results, add the detergent while washer is filling. Detergent applied directly to the fabric may cause the color to streak. Dry in a conventional dryer using the "Air Only" setting. This fabric will shrink if exposed to heat over 120°F.

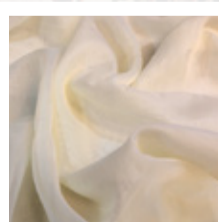


*I.F.R. fabrics are inherently flame resistant, meaning the flame retardancy is woven into the fabric and will never wash out.

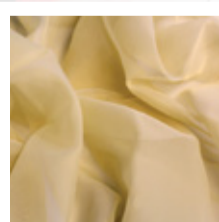
AVAILABLE COLORS:



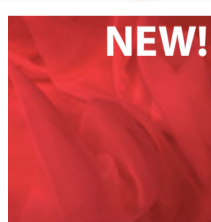
WHITE



IVORY



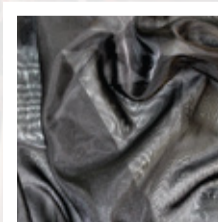
CHAMPAGNE



RED



VIOLET



BLACK

*All colors subject to dye lot variation. Please ask your sales representative for an actual dye lot sample prior to ordering.

WEDDING KITS

SHEER WEDDING BACKDROP



Because of its beauty, lightness, and soft touch, sheer fabric is a huge hit in the wedding and event industries. The fabric is also translucent, making it perfect for up-lighting and design.

- 8'H x 6'-10'W
- Includes everything you need to set up your own backwall
- Width can be purchased in 10', 20', 50', and 100' options



DOUBLE LAYER SHEER WEDDING BACKDROP



Similar to the Wedding Backdrop kit, the Double Layer Sheer Backdrop adds another dimension to your backwall.

- 8'H x 6'-10'W
- Uplights beautifully
- Need something custom? Just ask your sales representative



CREATE NEW SETTINGS WITH:

WEDDING CANOPY KIT



The Sheer Drape Wedding canopy is incredibly quick and easy to setup. Add interesting design elements to make your moment even more glamorous.

- Uses 8' Uprights, 16" x 14" Bases, 6'-10' Drape Supports, 9'x188" Sheer Drape
- Custom height available
- Wedding Canopy Top optional



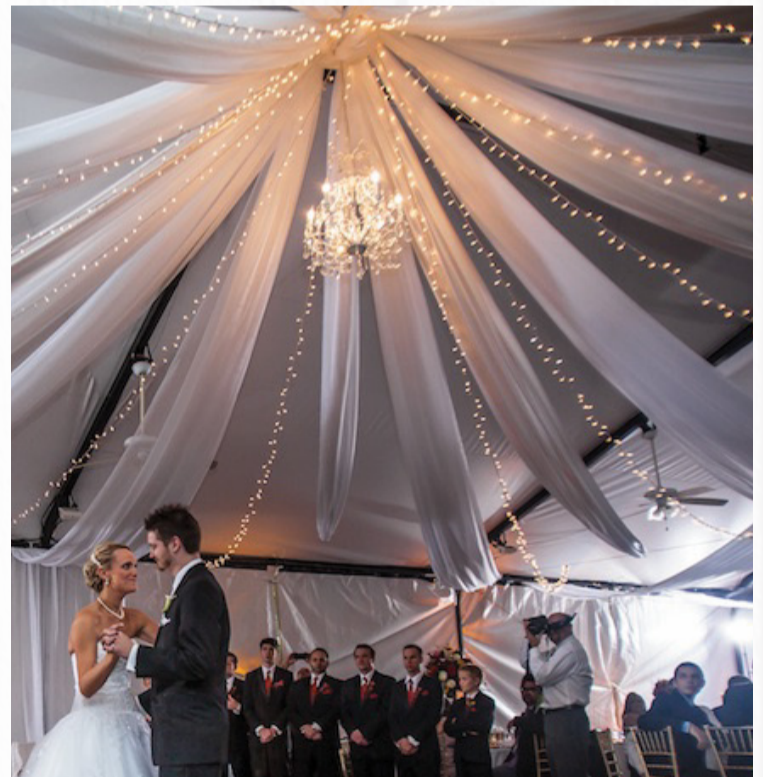
CEILING SWAG



***SOLD BY THE ROLL**

Create a beautiful atmosphere with Ceiling Swag. It moves beautifully and adds a great finishing touch to your wedding or event.

- 118"W x 150 yards per roll
- 4" pockets top & bottom
- Inherently Flame Resistant (I.F.R.)
- Edges treated to prevent fray



CUSTOM BACKDROPS



Get a custom backdrop made specifically for your wedding. Use any artwork or full color image to enhance your wedding.

- 8' x 10' (standard size) - can print up to 50'L
- 100% Polyester fabric - lightweight and easy to transport
- Permanent vivid color - will not crack or peel

DYE SUB WEDDING BACKDROP



DYE SUB WITH DOUBLE LAYER SHEER WEDDING BACKDROP



Dye Sub Wedding Backdrops allow you to fully customize your wedding. Feature a picture of the bride and groom, a beautiful scenic landscape, or any image you need and surround it with beautiful translucent sheer.

- Includes everything you need to set up your own backwall with a full color Dye Sub
- Fabric width can be purchased in 30', 50', 70', and 90' options.